

Quality ID #134: Preventive Care and Screening: Screening for Depression and Follow-Up Plan

2023 COLLECTION TYPE: **MEDICARE PART B CLAIMS**

MEASURE TYPE: Process

DESCRIPTION:
Percentage of patients aged 12 years and older screened for depression on the date of the encounter or up to 14 days prior to the date of the encounter using an age-appropriate standardized depression screening tool AND if positive, a follow-up plan is documented on the date of the qualifying encounter.

INSTRUCTIONS:
This measure is to be submitted a minimum of **once per measurement period** for patients seen during the measurement period. The most recent screening will be used for performance calculation. This measure may be submitted by Merit-based Incentive Payment System (MIPS) eligible clinicians who perform the quality actions described in the measure based on the services provided and the measure-specific denominator coding. The follow-up plan must be related to a positive depression screening, example: "Patient referred for psychiatric evaluation due to positive depression screening".

NOTE: Patient encounters for this measure conducted via telehealth (e.g., encounters coded with GQ, GT, 95, or POS 02 modifiers) are allowable.

Measure Submission Type:
Measure data may be submitted by individual MIPS eligible clinicians using Medicare Part B claims. The listed denominator criteria are used to identify the intended patient population. The numerator quality data codes included in this specification are used to submit the quality actions allowed by the measure on the claim form(s). All measure-specific coding should be submitted on the claim(s) representing the denominator eligible encounter and selected numerator option.

DENOMINATOR:
All patients aged 12 years and older at the beginning of the measurement period with at least one qualifying encounter during the measurement period

DENOMINATOR NOTE: The intent of the measure is to screen for depression in patients who have never had a diagnosis of depression or bipolar disorder prior to the eligible encounter used to evaluate the numerator. Patients who have been diagnosed with depression or bipolar disorder will be excluded from the measure.

**Signifies that this CPT Category I code is a non-covered service under the Medicare Part B Physician Fee Schedule (PFS). These non-covered services will not be counted in the denominator population for Medicare Part B claims measures.*

Denominator Criteria (Eligible Cases):

Patients aged ≥ 12 years at the beginning of the measurement period

AND

Patient encounter during the performance period (CPT or HCPCS): 59400, 59510, 59610, 59618, 90791, 90792, 90832, 90834, 90837, 92625, 96105, 96110*, 96112, 96116, 96125, 96136, 96138, 96156, 96158,

97161, 97162, 97163, 97164, 97165, 97166, 97167, 98966, 98967, 98968, 99078, 99202, 99203, 99204, 99205, 99212, 99213, 99214, 99215, 99304, 99305, 99306, 99307, 99308, 99309, 99310, 99315, 99316, 99341, 99342, 99344, 99345, 99347, 99348, 99349, 99350, 99401*, 99402*, 99403*, 99424, 99441, 99442, 99443, 99483, 99484, 99491, 99492, 99493, 99384*, 99385*, 99386*, 99387*, 99394*, 99395*, 99396*, 99397*, G0101, G0402, G0438, G0439, G0444

WITHOUT

Place of Service (POS): 12

NUMERATOR:

Patients screened for depression on the date of the encounter or up to 14 days prior to the date of the encounter using an age-appropriate standardized tool AND if positive, a follow-up plan is documented on the date of the qualifying encounter

Definitions:

Screening – Completion of a clinical or diagnostic tool used to identify people at risk of developing or having a certain disease or condition, even in the absence of symptoms.

Standardized Depression Screening Tool – A normalized and validated depression screening tool developed for the patient population in which it is being utilized.

Examples of standardized depression screening tools include but are not limited to:

- **Adolescent Screening Tools (12-17 years)**
Patient Health Questionnaire for Adolescents (PHQ-A), Beck Depression Inventory-Primary Care Version (BDI-PC), Mood Feeling Questionnaire (MFQ), Center for Epidemiologic Studies Depression Scale (CES-D), Patient Health Questionnaire (PHQ-9), Pediatric Symptom Checklist (PSC-17), and PRIME MD-PHQ-2
- **Adult Screening Tools (18 years and older)**
Patient Health Questionnaire (PHQ-9), Beck Depression Inventory (BDI or BDI-II), Center for Epidemiologic Studies Depression Scale (CES-D), Depression Scale (DEPS), Duke Anxiety-Depression Scale (DADS), Geriatric Depression Scale (GDS), Cornell Scale for Depression in Dementia (CSDD), PRIME MD-PHQ-2, Hamilton Rating Scale for Depression (HAM-D), Quick Inventory of Depressive Symptomatology Self-Report (QID-SR), Computerized Adaptive Testing Depression Inventory (CAT-DI), and Computerized Adaptive Diagnostic Screener (CAD-MDD)
- **Perinatal Screening Tools**
Edinburgh Postnatal Depression Scale, Postpartum Depression Screening Scale, Patient Health Questionnaire 9 (PHQ-9), Beck Depression Inventory, Beck Depression Inventory–II, Center for Epidemiologic Studies Depression Scale, and Zung Self-rating Depression Scale

Follow-Up Plan – Documented follow-up for a positive depression screening **must** include one or more of the following:

- Referral to a provider for additional evaluation and assessment to formulate a follow-up plan for a positive depression screen
- Pharmacological interventions
- Other interventions or follow-up for the diagnosis or treatment of depression

Examples of a “follow-up plan” include but are not limited to:

- Referral to a provider or program for further evaluation for depression, for example, referral to a psychiatrist, psychiatric nurse practitioner, psychologist, clinical social worker, mental health counselor, or other mental health service such as family or group therapy, support group, depression management program, or other service for treatment of depression
- Other interventions designed to treat depression such as behavioral health evaluation, psychotherapy, pharmacological interventions, or additional treatment options

Not Eligible for Depression Screening or Follow-Up Plan (Denominator Exclusions) –

- **Patients who have been diagnosed with depression**
 - The following codes would be sufficient to define the Denominator Exclusion of depression: F01.51, F01.511, F01.518, F01.52, F01.53, F01.54, F01.A0, F01.A11, F01.A18, F01.A2, F01.A3, F01.A4, F01.B0, F01.B11, F01.B18, F01.B2, F01.B3, F01.B4, F01.C0, F01.C11, F01.C18, F01.C2, F01.C3, F01.C4, F32.A, F32.0, F32.1, F32.2, F32.3, F32.4, F32.5, F32.89, F32.9, F33.0, F33.1, F33.2, F33.3, F33.40, F33.41, F33.42, F33.8, F33.9, F34.1, F34.81, F34.89, F43.21, F43.23, F53.0, F53.1, O90.6, O99.340, O99.341, O99.342, O99.343, O99.345
 - For historical reference purposes these ICD-9 codes if documented would be sufficient to define the Denominator Exclusion of depression: 290.13, 290.21, 290.43, 296.20, 296.21, 296.22, 296.23, 296.24, 296.25, 296.26, 296.30, 296.31, 296.32, 296.33, 296.34, 296.35, 296.36, 296.81, 296.82, 298.0, 300.4, 301.12, 309.0, 309.1, 309.28, 311
- **Patients who have been diagnosed with bipolar disorder**
 - The following codes would be sufficient to define the Denominator Exclusion of bipolar disorder: F30.2, F30.3, F30.4, F30.8, F30.9, F30.10, F30.11, F30.12, F30.13, F31.0, F31.10, F31.11, F31.12, F31.13, F31.2, F31.30, F31.31, F31.32, F31.4, F31.5, F31.60, F31.61, F31.62, F31.63, F31.64, F31.70, F31.71, F31.72, F31.73, F31.74, F31.75, F31.76, F31.77, F31.78, F31.81, F31.89, F31.9
 - For historical reference purposes these ICD-9 codes if documented would be sufficient to define the Denominator Exclusion of bipolar disorder: 296.00, 296.01, 296.02, 296.03, 296.04, 296.05, 296.06, 296.40, 296.41, 296.42, 296.43, 296.44, 296.45, 296.46, 296.50, 296.51, 296.52, 296.53, 296.54, 296.55, 296.56, 296.60, 296.61, 296.62, 296.63, 296.64, 296.65, 296.66, 296.7, 296.80, 296.81, 296.82, 296.89

Patients with a Documented Reason for not Screening for Depression (Denominator Exceptions) –

Patient Reason(s)

Patient refuses to participate

OR

Medical Reason(s)

Documentation of medical reason for not screening patient for depression (e.g., cognitive, functional, or motivational limitations that may impact accuracy of results; patient is in an urgent or emergent situation where time is of the essence and to delay treatment would jeopardize the patient's health status)

Numerator Instructions:

A depression screen is completed on the date of the encounter or up to 14 days prior to the date of the encounter using an age-appropriate standardized depression screening tool AND if positive, a follow-up plan must be documented on the date of the encounter, such as referral to a provider for additional evaluation, pharmacological interventions, or other interventions for the treatment of depression.

This is a patient-based measure. Depression screening is required once per measurement period, not at all encounters. An age-appropriate, standardized, and validated depression screening tool must be used for numerator compliance. The name of the age-appropriate standardized depression screening tool utilized must be documented in the medical record. This measure does not require documentation of a specific score, just whether results of the normalized and validated depression screening tool used are considered positive or negative. Each standardized screening tool provides guidance on whether a particular score is considered positive for depression. The depression screening must be reviewed and addressed by the provider on the date of the encounter. Positive pre-screening results indicating a patient is at high risk for

self-harm should receive more urgent intervention as determined by the provider practice. The screening should occur during a qualifying encounter or up to 14 days prior to the date of the qualifying encounter.

The measure assesses the most recent depression screening completed either during the qualifying encounter or within the 14 calendar days prior to that encounter. Therefore, a clinician would not be able to complete another screening at the time of the encounter to count towards a follow-up, because that would serve as the most recent screening. In order to satisfy the follow-up requirement for a patient screening positively, the eligible clinician would need to provide one of the aforementioned follow-up actions, which does not include use of a standardized depression screening tool.

Should a patient screen positive for depression, a clinician should:

- Only order pharmacological intervention when appropriate and after sufficient diagnostic evaluation. However, for the purposes of this measure, additional screening and assessment during the qualifying encounter will not qualify as a follow-up plan.
- Opt to complete a suicide risk assessment when appropriate and based on individual patient characteristics. However, for the purposes of this measure, a suicide risk assessment or additional screening using a standardized tool, will not qualify as a follow-up plan.

Numerator Quality Data Coding Options:

Depression Screening or Follow-Up Plan not Documented, Patient not Eligible

Denominator Exclusion: G9717:

Documentation stating the patient has had a diagnosis of depression or has had a diagnosis of bipolar disorder

OR

Screening for Depression Documented as Positive, AND Follow-Up Plan Documented

Performance Met: G8431:

Screening for depression is documented as being positive AND a follow-up plan is documented

OR

Screening for Depression Documented as Negative, Follow-Up Plan not Required

Performance Met: G8510:

Screening for depression is documented as negative, a follow-up plan is not required

OR

Screening for Depression not Completed, Documented Reason

Denominator Exception: G8433:

Screening for depression not completed, documented patient or medical reason

OR

Screening for Depression not Documented, Reason not Given

Performance Not Met: G8432:

Depression screening not documented, reason not given

OR

Screening for Depression Documented as Positive, Follow-Up Plan not Documented, Reason not Given

Performance Not Met: G8511:

Screening for depression documented as positive, follow-up plan not documented, reason not given

RATIONALE:

Depression is a serious medical illness associated with higher rates of chronic disease, increased health care utilization, and impaired functioning [1]. Results from a 2016 U.S. survey data indicated that 12.8 percent of adolescents (3.1 million adolescents) had a major depressive episode (MDE) in the past year, with nine percent of adolescents (2.2 million adolescents) having one MDE with severe impairment [2]. The odds of a diagnosis of depression are believed to be 2.6 times greater for children and adolescents exposed to trauma as compared to those unexposed or less exposed [3]. Children and teens with major depressive disorder (MDD) have been found to have difficulty carrying out their daily

activities, relating to others, growing up healthy, and are at an increased risk of suicide [4].

The same 2016 study indicated that 6.7 percent of adults aged 18 or older (16.2 million adults) had at least one MDE with 4.3 percent of adults (10.3 million adults) having one MDE with severe impairment in the past year [2]. Moreover, it is estimated 22.9 percent of adult patients with chronic pain (2.2 million adults) were diagnosed with comorbid depression from 2011 to 2015, with an upward trend of prevalence among Black Americans, patients aged 65 to 84 years old, Medicare and Medicaid insured patients, and patients from zip code areas with low annual household incomes [5].

Depression and other mood disorders, such as bipolar disorder and anxiety disorders, especially during the perinatal period, can have devastating effects on women, infants, and families [6]. It's estimated that the global prevalence of antenatal (or perinatal) depression ranges from 15 to 65 percent, with current or previous exposure to abuse and violence, lack of social support, and family history of mental disorders being risk factors. Depressive symptoms measured during pregnancy have been shown to influence the quality of the postpartum mother-infant relationship [7]. Additionally, the risk of low birth weight and preterm birth is higher among infants born from depressed mothers [8].

Negative outcomes associated with depression make it crucial to screen in order to identify and treat depression in its early stages. Data indicates that as the severity of depressive symptoms increase, rates of having difficulty with work, home, or social activities related to depressive symptoms increase. For those twelve and older with mild depressive symptoms, 45.7 percent reported difficulty with activities, and for those with severe depressive symptoms, 88 percent reported difficulty [1]. Depression also imposes significant economic burden through direct and indirect costs, supporting the need for regular depression screening. "In the United States, an estimated \$22.8 billion was spent on depression treatment in 2009, and lost productivity cost an additional estimated \$23 billion in 2011" [9].

Numerous studies have found significant disparities in depression prevalence and treatment among racial/ethnic minorities. One study revealed that Indigenous adults are at a high risk for posttraumatic stress disorder, depression, suicide, substance use disorder, and concurrent behavioral health disorders secondary to these initial health problems [10]. Additionally, though rates of depression are lower among Blacks and Hispanics than among whites, depression among Blacks and Hispanics is likely to be more recurrent. Furthermore, 48 percent of whites receive mental health services, compared to just 31 percent of Blacks and Hispanics, and 22 percent of Asians [11]. Asian Americans and Black Americans are also significantly more likely to utilize emergency rooms for depression treatment, which contributes to inconsistent follow-up care [12].

While primary care providers (PCPs) serve as the first line of defense in the detection of depression, studies show that PCPs fail to recognize up to 46 percent of depressed patients [13]. "In nationally representative U.S. surveys, about eight percent of adolescents reported having major depression in the past year. Only 36 percent to 44 percent of children and adolescents with depression receive treatment, suggesting that the majority of depressed youth are undiagnosed and untreated" [4]. Furthermore, evidence supports that screening for depression in pregnant and postpartum women is of moderate net benefit and treatment options for positive depression screening should be available for patients twelve and older including pregnant and postpartum women.

This measure seeks to align with clinical guideline recommendations as well as the Healthy People 2020 recommendation for routine screening for mental health problems as a part of primary care for both children and adults and makes an important contribution to the quality domain of community and population health [14].

References

1. Pratt, L. A., & Brody, D. J. (2014). Depression in the U.S. household population, 2009-2012. NCHS Data Brief No. 172. Hyattsville, MD: U.S. Department of Health and Human Services, Centers for Disease Control and Prevention, National Center for Health Statistics. Retrieved from <https://www.cdc.gov/nchs/data/databriefs/db172.pdf>
2. Substance Abuse and Mental Health Services Administration. (2017). Key substance use and mental health indicators in the United States: Results from the 2016 National Survey on Drug Use and Health. Rockville, MD: Center for Behavioral Health Statistics and Quality, Substance Abuse and Mental Health Services Administration.

- Retrieved from <https://www.samhsa.gov/data/sites/default/files/NSDUH-FFR1-2016/NSDUH-FFR1-2016.htm>
3. Vibhakar, V., Allen, L. R., Gee, B., & Meiser-Stedman, R. (2019). A systematic review and meta-analysis on the prevalence of depression in children and adolescents after exposure to trauma. *Journal of affective disorders*, 255, 77–89. <https://doi.org/10.1016/j.jad.2019.05.005>
 4. Siu, A. L., on behalf of USPSTF. (2016). Screening for depression in children and adolescents: U.S. Preventive Services Task Force recommendation statement. *Annals of Internal Medicine*, 164(5), 360-366. doi:10.7326/M15-2957
 5. Orhurhu, V., Olusunmade, M., Akinola, Y., Urits, I., Orhurhu, M. S., Viswanath, O., ... Gill, J. S. (2019). Depression Trends in Patients with Chronic Pain: An Analysis of the Nationwide Inpatient Sample. *Pain physician*, 22(5), E487–E494.
 6. American College of Obstetricians and Gynecologists, Committee on Obstetric Practice. (2018). ACOG Committee Opinion Number 757: Screening for perinatal depression. *Obstetrics and Gynecology*, 132(5), e208-e212. doi: 10.1097/AOG.0000000000002927
 7. Hazell Raine, K., Nath, S., Howard, L. M., Cockshaw, W., Boyce, P., Sawyer, E., & Thorpe, K. (2020). Associations between prenatal maternal mental health indices and mother-infant relationship quality 6 to 18 months' postpartum: A systematic review. *Infant mental health journal*, 41(1), 24–39. <https://doi.org/10.1002/imhj.21825>
 8. Dadi, A. F., Miller, E. R., Bisetegn, T. A., & Mwanri, L. (2020). Global burden of antenatal depression and its association with adverse birth outcomes: an umbrella review. *BMC public health*, 20(1), 173. <https://doi.org/10.1186/s12889-020-8293-9>
 9. Siu, A. L., & USPSTF. (2016). Screening for depression in adults: U.S. Preventive Services Task Force recommendation statement. *Journal of the American Medical Association*, 315(4), 380-387. doi:10.1001/jama.2015.18392
 10. Ka'apu, K., & Burnette, C. E. (2019). A Culturally Informed Systematic Review of Mental Health Disparities Among Adult Indigenous Men and Women of the USA: What is known?. *British journal of social work*, 49(4), 880–898. <https://doi.org/10.1093/bjsw/bcz009>
 11. American Psychiatric Association. (2017). Mental Health Disparities: Diverse Populations. Retrieved from <https://www.psychiatry.org/psychiatrists/cultural-competency/education/mental-health-facts>
 12. Lee, S. Y., Xue, Q. L., Spira, A. P., & Lee, H. B. (2014). Racial and ethnic differences in depressive subtypes and access to mental health care in the United States. *Journal of affective disorders*, 155, 130–137. <https://doi.org/10.1016/j.jad.2013.10.037>
 13. Borner, I., Braunstein, J. W., St. Victor, R., & Pollack, J. (2010). Evaluation of a 2-question screening tool for detecting depression in adolescents in primary care. *Clinical Pediatrics*, 49(10), 947-995. doi:10.1177/0009922810370203
 14. U.S. Department of Health and Human Services. (2014). Healthy People 2020: Mental health and mental disorders. Washington, DC: U.S. Department of Health and Human Services. Retrieved from <http://www.healthypeople.gov/2020/topicsobjectives2020/objectiveslist.aspx?topicId=28>

CLINICAL RECOMMENDATION STATEMENTS:

Adolescent Recommendation (12-18 years):

“The USPSTF recommends screening for MDD in adolescents aged 12 to 18 years. Screening should be implemented with adequate systems in place to ensure accurate diagnosis, effective treatment, and appropriate follow-up (B recommendation)” [1].

Adult Recommendation (18 years and older):

“The USPSTF recommends screening for depression in the general adult population, including pregnant and postpartum women. Screening should be implemented with adequate systems in place to ensure accurate diagnosis, effective treatment, and appropriate follow-up (B recommendation)” [2].

“The USPSTF recommends that clinicians provide or refer pregnant and postpartum persons who are at increased risk of perinatal depression to counseling interventions. (B recommendation)” [3]. The American College of Obstetricians and Gynecologists (ACOG) provides the following recommendation: “All obstetrician–gynecologists and other obstetric care

providers should complete a full assessment of mood and emotional well-being (including screening for postpartum depression and anxiety with a validated instrument) during the comprehensive postpartum visit for each patient." [4].

The Institute for Clinical Systems Improvement (ICSI) health care guideline, Adult Depression in Primary Care, provides the following recommendations:

1. "Clinicians should routinely screen all adults for depression using a standardized instrument."
2. "Clinicians should establish and maintain follow-up with patients."
3. "Clinicians should screen and monitor depression in pregnant and post-partum women." [5]

References

1. Siu, A. L., on behalf of USPSTF. (2016). Screening for depression in children and adolescents: U.S. Preventive Services Task Force recommendation statement. *Annals of Internal Medicine*, 164(5), 360-366. doi:10.7326/M15-2957
2. Siu, A. L., & USPSTF. (2016). Screening for depression in adults: U.S. Preventive Services Task Force recommendation statement. *Journal of the American Medical Association*, 315(4), 380-387. doi:10.1001/jama.2015.18392
3. U.S. Preventive Services Task Force. (2019). Interventions to Prevent Perinatal Depression: US Preventive Services Task Force Recommendation Statement. *JAMA*, 321(6):580–587. doi:10.1001/jama.2019.0007
4. American College of Obstetricians and Gynecologists, Committee on Obstetric Practice. (2018). ACOG Committee Opinion Number 757: Screening for perinatal depression. *Obstetrics and Gynecology*, 132(5), e208-e212. doi: 10.1097/AOG.0000000000002927
5. Trangle, M., Gursky, J., Haight, R., Hardwig, J., Hinnenkamp, T., Kessler, D.,... Myszkowski, M. (2016). Adult depression in primary care. Bloomington, MN: Institute for Clinical Systems Improvement. Retrieved from <https://www.icsi.org/guideline/depression/>

COPYRIGHT:

These performance measures are not clinical guidelines and do not establish a standard of medical care, and have not been tested for all potential applications.

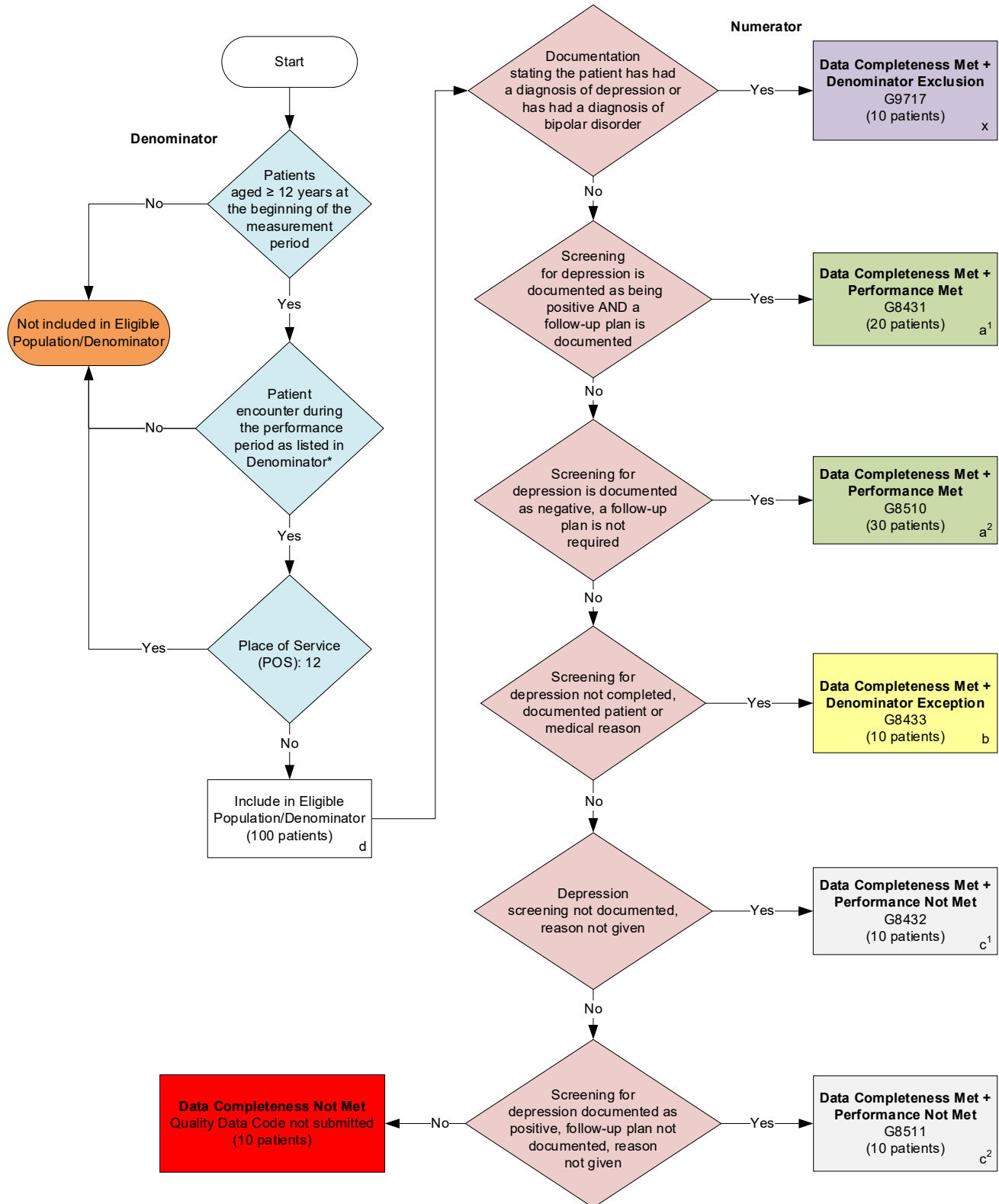
THE MEASURES AND SPECIFICATIONS ARE PROVIDED "AS IS" WITHOUT WARRANTY OF ANY KIND.

Limited proprietary coding is contained in the measure specifications for convenience. Users of the proprietary code sets should obtain all necessary licenses from the owners of these code sets.

CPT® contained in the Measure specifications is copyright 2004-2022 American Medical Association. LOINC® is copyright 2004-2022 Regenstrief Institute, Inc. This material contains SNOMED Clinical Terms® (SNOMED CT®) copyright 2004-2022 International Health Terminology Standards Development Organisation. ICD-10 is copyright 2022 World Health Organization. All Rights Reserved.

**2023 Medicare Part B Claims Flow for Quality ID #134:
Preventive Care and Screening: Screening for Depression and Follow-Up Plan**

Disclaimer: Refer to the measure specification for specific coding and instructions to submit this measure.



SAMPLE CALCULATIONS

Data Completeness Rate=

$$\frac{\text{Denominator Exclusion (x=10)} + \text{Performance Met (a}^1\text{+a}^2\text{=50)} + \text{Denominator Exception (b=10)} + \text{Performance Not Met (c}^1\text{+c}^2\text{=20)}}{\text{Eligible Population / Denominator (d=100)}} = \frac{90 \text{ patients}}{100 \text{ patients}} = 90.00\%$$

Performance Rate=

$$\frac{\text{Performance Met (a}^1\text{+a}^2\text{=50)}}{\text{Data Completeness Numerator (90) - Denominator Exclusion (x=10) - Denominator Exception (b=10)}} = \frac{50 \text{ patients}}{70 \text{ patients}} = 71.43\%$$

*See the posted measure specification for specific coding and instruction to submit this measure.

NOTE: Submission Frequency: Patient-Intermediate

CPT only copyright 2022 American Medical Association. All rights reserved.
The measure diagrams were developed by CMS as a supplemental resource to be used
in conjunction with the measure specifications. They should not be used alone or as a
substitution for the measure specification.

v7

**2023 Medicare Part B Claims Flow Narrative for Quality ID #134:
Preventative Care and Screening: Screening for Depression and Follow-Up Plan**

Disclaimer: Refer to the measure specification for specific coding and instructions to submit this measure.

1. Start with Denominator
2. Check *Patients aged greater than or equal to 12 years at the beginning of the measurement period*:
 - a. If *Patients aged greater than or equal to 12 years at the beginning of the measurement period* equals No, do not include in *Eligible Population/Denominator*. Stop processing.
 - b. If *Patients aged greater than or equal to 12 years at the beginning of the measurement period* equals Yes, proceed to check *Patient encounter during the performance period as listed in Denominator**.
3. Check *Patient encounter during the performance period as listed in Denominator**:
 - a. If *Patient encounter during the performance period as listed in Denominator** equals No, do not include in *Eligible Population/Denominator*. Stop processing.
 - b. If *Patient encounter during the performance period as listed in Denominator** equals Yes, proceed to check *Place of Service (POS)*.
4. Check *Place of Service (POS)*:
 - a. If *Place of Service (POS)* equals Yes, do not include in *Eligible Population/Denominator*. Stop processing.
 - b. If *Place of Service (POS)* equals No, include in the *Eligible Population/Denominator*.
5. Denominator Population:
 - Denominator Population is all Eligible Patients in the Denominator. Denominator is represented as Denominator in the Sample Calculation listed at the end of this document. Letter d equals 100 patients in the Sample Calculation.
6. Start Numerator
7. Check *Documentation stating the patient has had a diagnosis of depression or has had a diagnosis of bipolar disorder*:
 - a. If *Documentation stating the patient has had a diagnosis of depression or has had a diagnosis of bipolar disorder* equals Yes, include in *Data Completeness Met and Denominator Exclusion*.
 - *Data Completeness Met and Denominator Exclusion* letter is represented in the Data Completeness and Performance Rate in the Sample Calculation listed at the end of this document. Letter x equals 10 patients in the Sample Calculation.
 - b. If *Documentation stating the patient has had a diagnosis of depression or has had a diagnosis of bipolar disorder* equals No, proceed to check *Screening for depression is documented as being positive AND a follow-up plan is documented*.
8. Check *Screening for depression is documented as being positive AND a follow-up plan is documented*:
 - a. If *Screening for depression is documented as being positive AND a follow-up plan is documented* equals Yes, include in *Data Completeness Met and Performance Met*.

- *Data Completeness Met and Performance Met* letter is represented in the Data Completeness and Performance Rate in the Sample Calculation listed at the end of this document. Letter a¹ equals 20 patients in the Sample Calculation.
- b. If *Screening for depression is documented as being positive AND a follow-up plan is documented* equals No, proceed to check *Screening for depression is documented as negative, a follow-up plan is not required*.
9. Check *Screening for depression is documented as negative, a follow-up plan is not required*:
- a. If *Screening for depression is documented as negative, a follow-up plan is not required* equals Yes, include in *Data Completeness Met and Performance Met*.
- *Data Completeness Met and Performance Met* letter is represented in the Data Completeness and Performance Rate in the Sample Calculation listed at the end of this document. Letter a² equals 30 patients in the Sample Calculation.
- b. If *Screening for depression is documented as negative, a follow-up plan is not required* equals No, proceed to check *Screening for depression not completed, documented patient or medical reason*.
10. Check *Screening for depression not completed, documented patient or medical reason*:
- a. If *Screening for depression not completed, documented patient or medical reason* equals Yes, include in *Data Completeness Met and Denominator Exception*.
- *Data Completeness Met and Denominator Exception* letter is represented in the Data Completeness and Performance Rate in the Sample Calculation listed at the end of this document. Letter b equals 10 patients in the Sample Calculation.
- b. If *Screening for depression not completed, documented patient or medical reason* equals No, proceed to check *Depression screening not documented, reason not given*.
11. Check *Depression screening not documented, reason not given*:
- a. If *Depression screening not documented, reason not given* equals Yes, include in *Data Completeness Met and Performance Not Met*.
- *Data Completeness Met and Performance Not Met* letter is represented in the Data Completeness in the Sample Calculation listed at the end of this document. Letter c¹ equals 10 patients in the Sample Calculation.
- b. If *Depression screening not documented, reason not given* equals No, proceed to check *Screening for depression documented as positive, follow-up plan not documented, reason not given*.
12. Check *Screening for depression documented as positive, follow-up plan not documented, reason not given*:
- a. If *Screening for depression documented as positive, follow-up plan not documented, reason not given* equals Yes, include in *Data Completeness Met and Performance Not Met*.
- *Data Completeness Met and Performance Not Met* letter is represented in the Data Completeness in the Sample Calculation listed at the end of this document. Letter c² equals 10 patients in the Sample Calculation.
- b. If *Screening for depression documented as positive, follow-up plan not documented, reason not given* equals No, proceed to check *Data Completeness Not Met*.

13. Check *Data Completeness Not Met*:

- If *Data Completeness Not Met*, the Quality Data Code was not submitted. 10 patients have been subtracted from the Data Completeness Numerator in the Sample Calculation.

Sample Calculations:

Data Completeness Rate equals Denominator Exclusion (x equals 10 patients) plus Performance Met (a¹ plus a² equals 50 patients) plus Denominator Exception (b equals 10 patients) plus Performance Not Met (c¹ plus c² equals 20 patients) divided by Eligible Population/Denominator (d equals 100 patients). All equals 90 patients divided by 100 patients. All equals 90.00 percent.

Performance Rate equals Performance Met (a¹ plus a² equals 50 patients) divided by Data Completeness Numerator (90 patients) minus Denominator Exclusion (x equals 10 patients) minus Denominator Exception (b equals 10 patients). All equals 50 patients divided by 70 patients. All equals 71.43 percent.

*See the posted measure specification for specific coding and instruction to submit this measure.

NOTE: Submission Frequency: Patient-Intermediate

The measure diagrams were developed by CMS as a supplemental resource to be used in conjunction with the measure specifications. They should not be used alone or as a substitution for the measure specification.